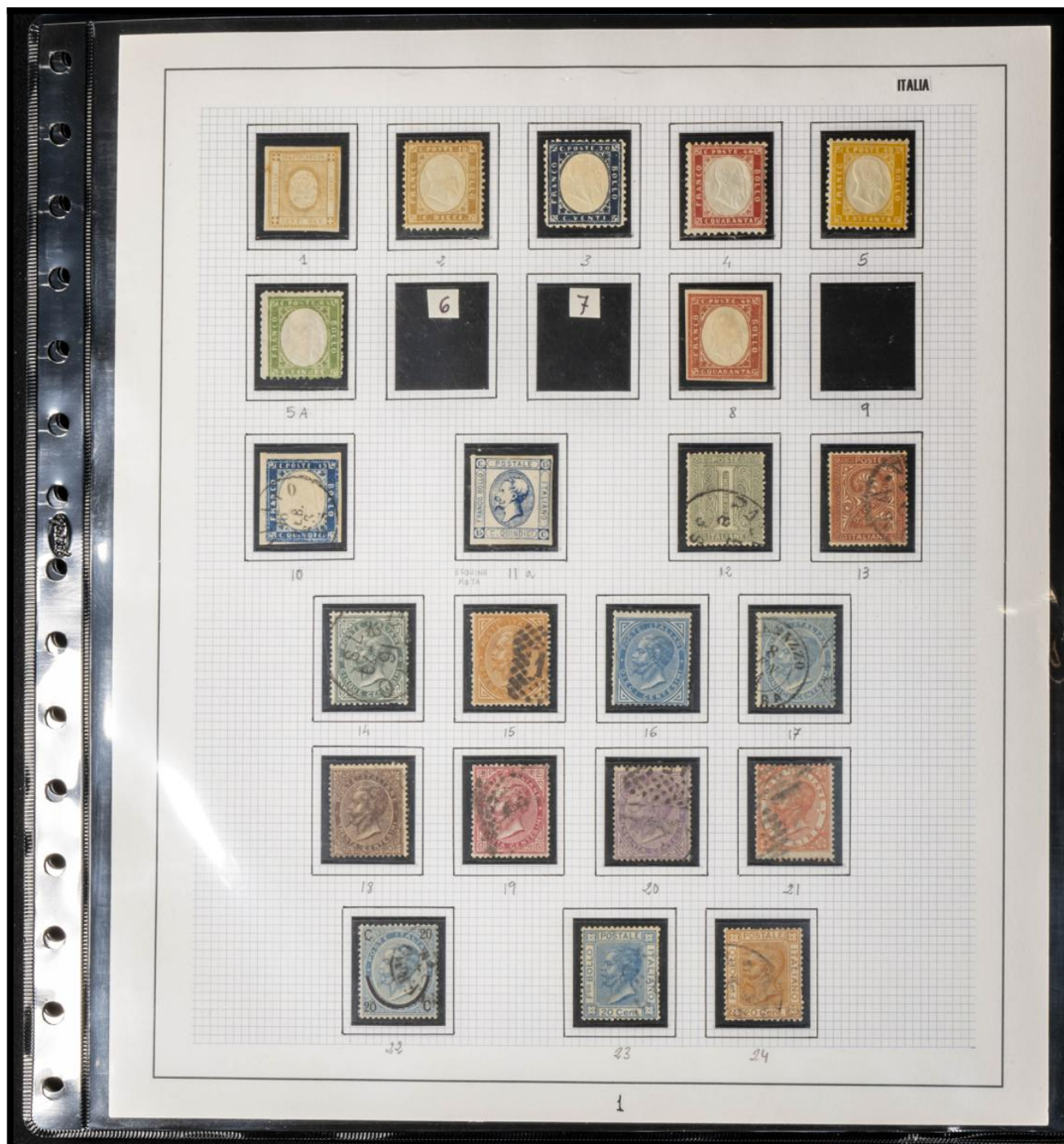


Lote: 758

Subasta Online Lotes y Colecciones #119

*º (1862ca). Interesante y muy completa colección de Italia entre 1862 y 2000, en nuevo y usado, la parte inicial la mayoría en usado y con muchas de las series significativas en nuevo e incluyendo correo aéreo, hojas bloque y otros. A EXAMINAR. Yvert 2024: ++15.000 Euros



ITALIA



ITALIA



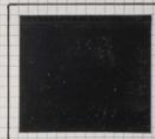
25



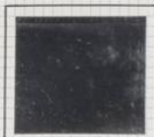
26



27



28



29



30



31



32



33



34



35



36



37



38



39



40



41



42



46



47



48



49



50



51

ITALIA



75



76



77



EXPRES 17



79



80



81



EXPRES 1



EXPRES 6



EXPRES 8



EXPRES 2



EXPRES 5



EXPRES 7



78



82



92

ITALIA



23



25

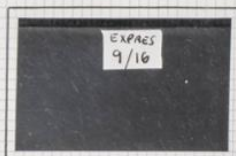


24



26

EXPRES



9



10



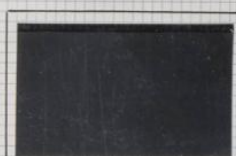
11



12



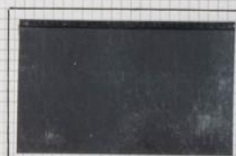
13



14



15



16



18



24



25



26

ITALIA



88



89



90



91



95



96



97



98



99



100



101



87



102



103

ITALIA



105 106 107 108 109



104 117 118 119 120



93 94 A 1



109 A 109 B 109 C



110 110 A 111 112

ITALIA



105 106 107 108 109



104 117 118 119 120



93 94 A 1



109 A 109 B 109 C



110 110 A 111 112

ITALIA



113



114



115



116



152



153



154



155



121



123



122



134



135



136



137



139



138

ITALIA

NEUMÁTICOS



ITALIA



A 10



A 11



A 12



128



131



132



133



169



170



172



173



171



174



129



130



175



176



177

ITALIA



125



124



126



127



140



141



142



196



197



198



199



143



144



145



146



147



148



149



150



151



156



157



158



159



160



161



162

RAYBAUDI

EXPERTS

YVERT & TELLIER: N° 156/168

ITALIA 1924, serie soprastampata "Crociera Italiana" (Sass. e Unif. N. 162-168) nuova.

A nostro parere la serie qui sotto fotograficamente riprodotta ha soprastampe e gomma originali. Poiché trovasi tuttora in ottimo stato di conservazione, è stata firmata.

Roma, 21 dicembre 2006



Shigui

Ch. Taylor

P.O. BOX 456 - TEL. 06.678.42.96

ROMA
00187

VIA DI PROPAGANDA, 27

ITALIA



163



164



165



166



167



168



A 3



A 4



A 5



A 6



A 7



A 8



A 9

ITALIA



200



201



202



203



204



205



206



207



208



186



188



189



187



190



191



233

ITALIA



230



232



261



266



272



257



232 A



260



227



231



256



236



240



270



265



267



274



275



280



270



277

ITALIA



236



463



478



235



242



229



233



234



243



464



471



462



468



473



457



225



228



479



241



224



237



232



239



476

ITALIA



451



451A



EXPRES 33



452



453



454

REPUBBLICA SOCIAL ITALIANA



27



28



29



30



31



32



33



34



35



36



37



38



39



40

ITALIA



192



209



254



193



210



255



194



211



256



195



212



257



244



248



247



249



245



250



246

ITALIA



251



252



253



A 22



A 21



A 23



A 24



263



264



265



266



267



268



269



270



271

20

ITALIA



A 18



A 19



A 20



A 11A



A 13



A 15



A 12A



A 14



A 12



A 16



A 17



258



262



259



260



261



272

ITALIA



281



280



282



283



284



285



286



287



288



289



290



291



292



293



294

ITALIA



273



274



275



279



276



277



278



A 33



A 34



A 35



A 36



A 37



A 37



A 38

ITALIA



A 39



A 40



A 25



295



296



297



298



299



300



301



302



303



304

ITALIA



305



306



307



308



309



310



311



313



314



312



315



316



317



318



319



320

ITALIA



EXPRES 41



EXPRES 42



325



328



326



327



329



A 42



A 43



A 44



A 45



A 46



A 47



A 51A



A 51B

ITALIA



330



331



332



333



334



335



336



A 56



A 58



A 57



A 59



A 60



A 61



A 61A



A 62



A 63

ITALIA



321



322



323



324



A 49



A 48



CARTAS EXPRES 3



C. EXPRES 5



C. EXPRES 4



EXPRES 19



EXPRES 20

ITALIA



A 27



A 28



A 31A



A 29



A 31



A 26



A 30



344



345



337



338



A 68



A 41

ITALIA



339



343



340



341



342



A 64



A 65



A 67



A 66



A 52



A 53



A 55



A 54

30

ITALIA



360



361



362



363



A 85



346



349



354



347



348



350



351



352



353



355



356

ITALIA



A 69



A 70



A 76



A 72



A 71



A 77



A 73



A 75



A 74



A 78



A 79



A 80



A 81



A 82



A 83



A 84

ITALIA



368



369



370



371



372



373



364



366



367



365



A 91



A 93



A 95



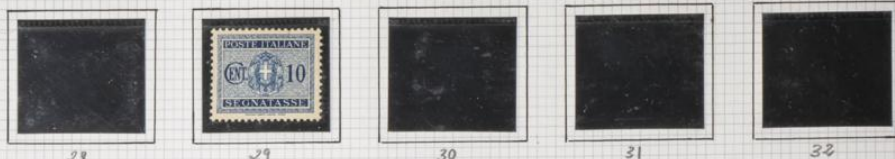
A 92



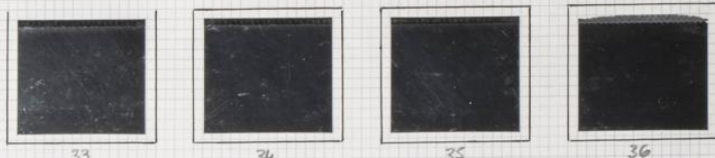
A 94

ITALIA

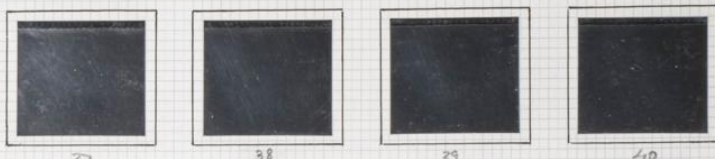
TASAS



28 29 30 31 32



33 34 35 36



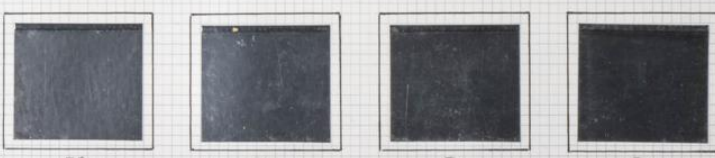
37 38 39 40



41 42 43 44 45



46 47 48 49



50 51 52 53

TASAS

ITALIA



54



55



56



57



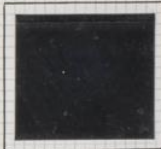
58



59



60



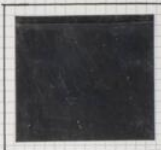
61



62



63



64



A 86



A 87



A 88



A 89



A 90



357



358



359

ITALIA



380



381



384



378



382



385



379



383



A 102



A 103



A 105



A 104



A 106

ITALIA



396



397



398



399



400



401



402



403



404



405



A 96



A 98



A 100



A 97



A 99



A 101

ITALIA



375



374



376



377



387



390



392



395



386



389



391



388



393



394

ITALIA



406



407



408



409



412



413



414



410



411



415



438



439



440



441



416



417



418

ITALIA



429



430



431



419



420



421



422



423



424



425



426



427



428



A 107



A 108



A 109



A 110



A 111



A 112

ITALIA



443



444



445



446



447



448



449



450



432



433



434



435



436



437



437A



437B



437C

CAMPIONE

ITALIA

ENCLAVE ITALIANE EN TERRITORIO SVIZZO



7



9



10



6



8



12
EXPRES



11



28



29



32



30



27



33



31

42



Francisco Gervás, 14 ■ 28020 Madrid
T: 915 480 799 ■ F: 915 416 070 ■ info@iberphil.com ■ www.iberphil.com

**Además de las piezas fotografiadas
este lote incluye los años completos
indicados en la descripción que, en
nuestra opinión, son AÑOS
COMPLETOS SIN FIJASELLOS.**

**In addition to the photographed
pieces, this lot includes issues of
complete years indicated in the
description wich, in our opinión, are
COMPLETE YEARS, WITHOUT HINGE.**