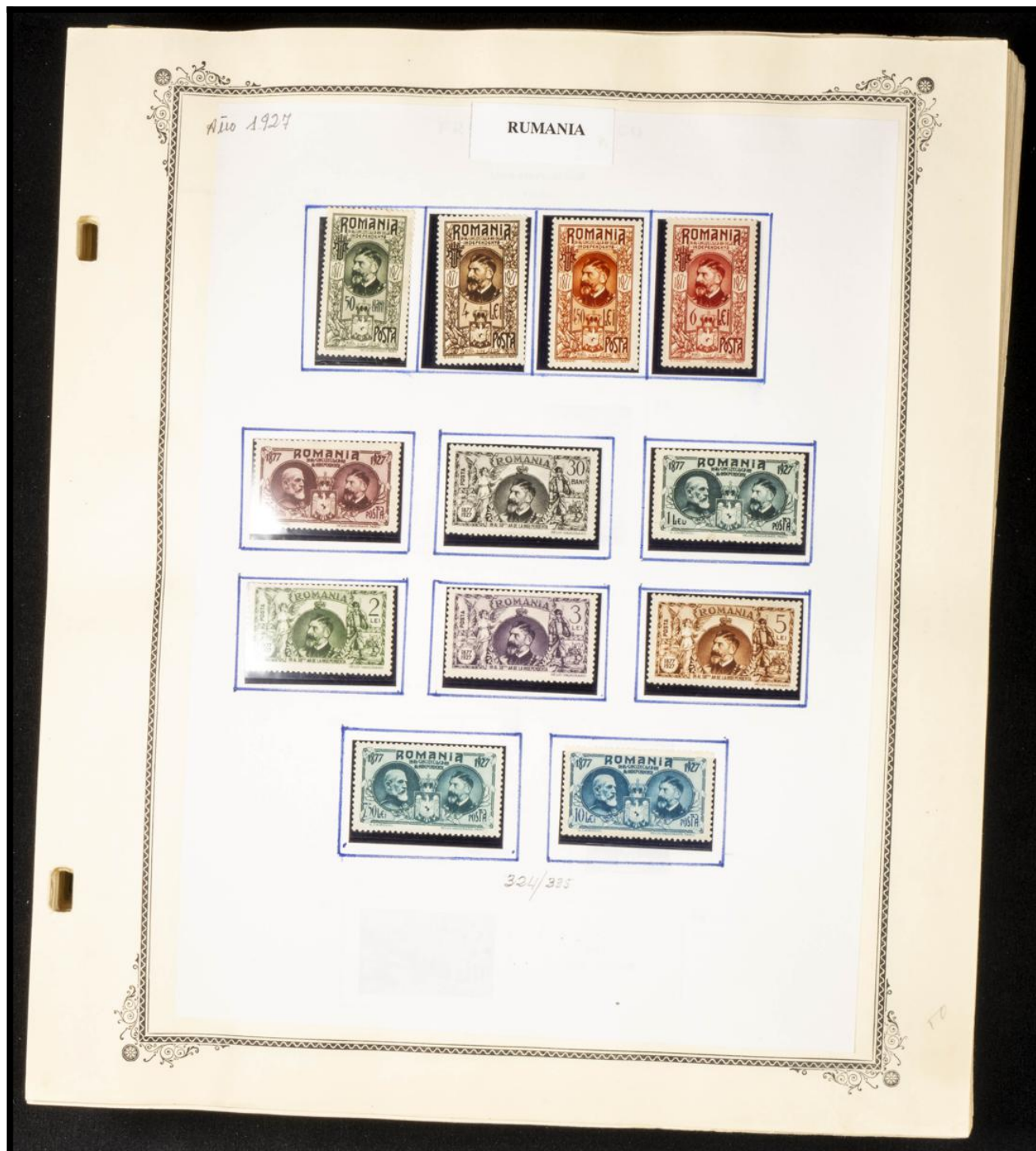


# Lote: 1120

## Subasta Online Lotes y Colecciones #119

\*º (1927ca). Interesante colección de Rumanía entre 1927 y 2003, en nuevo y usado e incluyendo hojas bloque y alguna minihoja además de alguna serie sin dentar. ALTO VALOR DE CATALOGO. A EXAMINAR.



Año 1924

RUMANIA



324/325

70

1939

RUMANIA



552/65



RUMANIA

1939

25 OCTOMVRIE 1937



Înălțarea în gradul de sublocotenent a  
MĂRIEI SALE MARELUI VOEVD MIHAI

-418-2

529/529.0



RUMANIA

7939-48



CENTENARUL NAȘTERII REGELUI CAROL I



PENTRU ÎNZESTRAREA ARMATEI

48-3  
0

48-3

553/554

RUMANIA

1939-40



CENTENARUL NAȘTERII REGELUI CAROL I



PENTRU ÎNZESTRAREA ARMATEI

LEI 50

48.4

H/3-4

557/561, 563

RUMANIA

1939-40



CENTENARUL NAȘTERII REGELUI CAROL I



PENTRU ÎNZESTRAREA ARMATEI

LEI 50

HB-5

HB-5

556-540/62

12



RUMANIA

1945



44/74

RUMANIA



916/20



930/33



934/34



949/51

1944

RUMANIA



952/59

9									
10									
11									
12									
13									
14									
15									
16									
17									
18									

October



RUMANIA

1955



971/75



1955

999/01



1424/29

12

RUMANIA

1956



1477/74

1956



1488/99 s/d

8



RUMANIA

1957



1550/51



1550/64



1558/60

1958



1561/62



RUMANIA

1958



1565/69A



1573/99

1958

RUMANIA



1580/89



1595/1606



RUMANIA



1634/42



1643/50



RUMANIA

1959



1652/61

1960



1664/69

1960

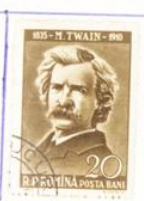
RUMANIA



1670/72



1693/95



1671/89

1690

1960

RUMANIA



1690/709



1960



1420/25



1426



1410/14



LUNA

1959

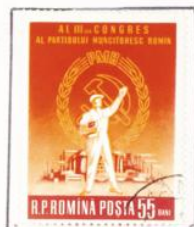
RUMANIA



1615



167/23



1726



177/32

RUMANIA

1960

IVORY COAST



HB-44



HB-45 5/4



1448/54



R. ROMANIA

1960



1733/38

1961



1737/40

1777/80

1962



1799

1814

1829/28

1960

RUMANIA



1961/62

1961



1960/61

1960



1961/62

1960



1955/59



RUMANIA

1967



1493/77

1961



1481/90

9





RUMANIA

FRENCH EQUATORIAL AFRICA

1961



1304/13

1961



1314



1699/45

1815/14





Rumania

1962

RUMANIA



1830/32

1860/52



1963

1853

1888



1899/60



1923

1942/63



1992

2007



RUMANIA

1962

RUMANIA



1830/32

1860/52



1963

1853

1888



1899/60



1923

1942/43



1992

2067

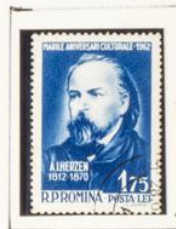


RUMANIA

1962



1834/41



1750/52



1834/62





1962



1949/54



no identificado



RUMANIA

GRAND COMORO ISLANDS

1962



1989/95



1990

1963



1902/04

1923



1909/15



1916/22

RUMANIA

1963



1924/28



1.929/36



RUMANIA

1963

SOMALI COAST



1934/41



1944/51



1962/59



RUMANIA

1964



1959/64



1967/75

9/85







RUMANIA

1964



2001/08



2009/12



2013/14

1964



2013/23



2040/45









1964

RUMANIA



2046/49



48-59

12

RUMANIA

1964



2050/53



2054/64

1964

RUMANIA



2062/66



2063/75



1964

RUMANIA



See next



2076/83 91



2084/91

RUMANIA

1965



2092/94



2100/09



RUMANIA

1965



2110/14



2119/24



RUMANIA

1965



2126/31



2131A-31F  
s/d

RUMANIA

1965



2132/34



2138/39



2140

2141

RUMANIA

1965



2145/54



RUMANIA

1965

FLORARI



2.156/65



2.164/69

RUMANIA

1965



2.170/44



2.175/49



1965

FRENCH INDUSTRIAL AFRICA



2.130/24



2.185/92



RUMANIA

1966



2.193/78



2.199/84

RUMANIA

21400

1965

RUMANIA



2155



2099/99



2140



2142/44



2166

1966



2202/65



2206/07



RUMANIA

1966



2.205



22/D



2.21/17



RUMANIA

1966



2.219/28



2.230/37

RUMANIA

1966



2.240/44



2.247/53



RUMANIA

1966



2.254/59



24430

H18-62



RUMANIA

1966



2.260



2.261



2.262



2.264/72

1964



2.273/74

RUMANIA

1964



2298/85

115 F.



2286/91



RUMANIA

1969



2.292/98



2.299/00



2.301



2.302/03



1964



2304/09



2310/15



← 1969



H3-64



2.317/22



RUMANIA

1964

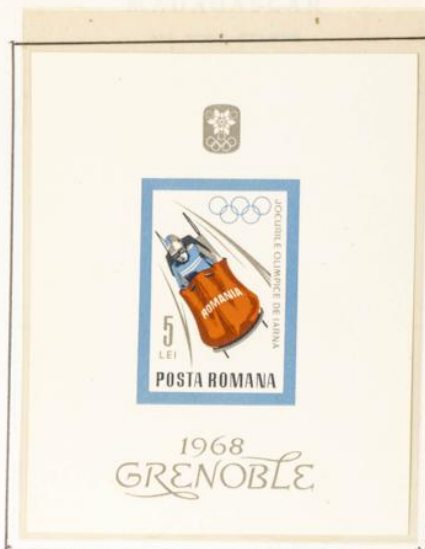


2324/23



2329/35





H3-65



2336



2337/38



2337

1/2



2229



2229



2239/39



2316



2323



2340

1967-68



2341/44



2371/86

1964



2345/65

150



1969



1968

2964/40



2371/76 48-66

2.366



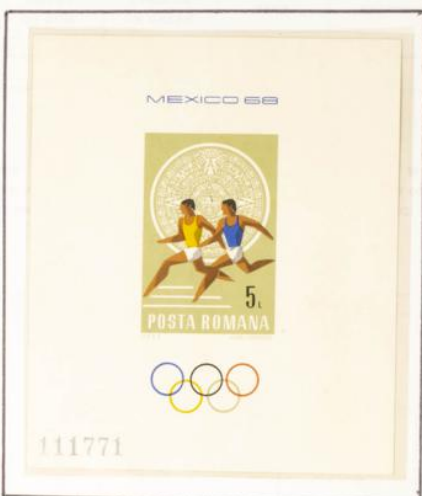


RUMANIA

1968



2397/99



H8-68



2400/07

1.968.- Obras de Arte de la Galeria Nacional de Bucarest



2.408/13



968



2415



2416/01



2422

60

1968



2423/30



2434/39



2440/45



1968



243/33



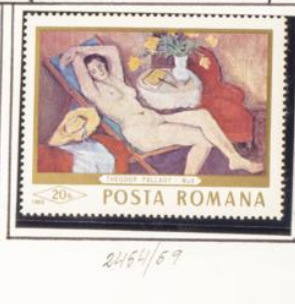
48-69 5/11





RUMANIA

1969



2464/69



H13-71

RUMANIA

1969



2468/75



2476



2477/79



2480/85



2495



2496





2486/88



2489/94



086681



4B-75 s/d.



1969



2499/02



2503/06



2508



2440  
RUMANIA



2414



2460



2461/62



2509/12



2564/69



2658



2455/56

36-85

1970



25/3/76



25/3/74



2504

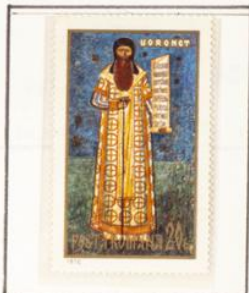


RUMANIA

1940

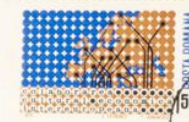


2525/20



H3-74

RUMANIA





RUMANIA

1970



2539/42



H3-46



2549



2550



2561

RUMANIA

1990





RUMANIA

1990



254/96



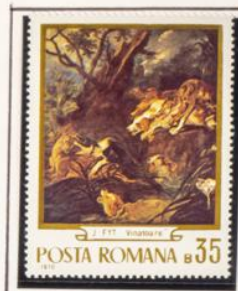
2548



2579

RUMANIA

1940



2.56/66



2590



118992

48-79



2597

2560



1970



24/11/70 *Miró*

*Un gând al lui Joan Miró  
pentru copiii sinistrati din România*

046397

HB-81



2570/85



Francisco Gervás, 14 • 28020 Madrid  
T: 915 480 799 • F: 915 416 070 • [info@iberphil.com](mailto:info@iberphil.com) • [www.iberphil.com](http://www.iberphil.com)

**Además de las piezas fotografiadas  
este lote incluye los años completos  
indicados en la descripción que, en  
nuestra opinión, son AÑOS  
COMPLETOS SIN FIJASELLOS.**

-----

**In addition to the photographed  
pieces, this lot includes issues of  
complete years indicated in the  
description wich, in our opinión, are  
COMPLETE YEARS, WITHOUT HINGE.**